

1. INTRODUCTION

- There are marked **disparities in green space access and use for different socio-demographic groups**^{1,2}.
- We need to explore the barriers to access for those who are underrepresented in green spaces and ensure green spaces are accessible to all³. **Involving the community** in the design and development of green spaces is a crucial step.
- **Co-design** is emerging in urban planning. This requires equitable involvement of all participants, regardless of their socioeconomic status, in the planning and implementation of a service⁴.

AIM

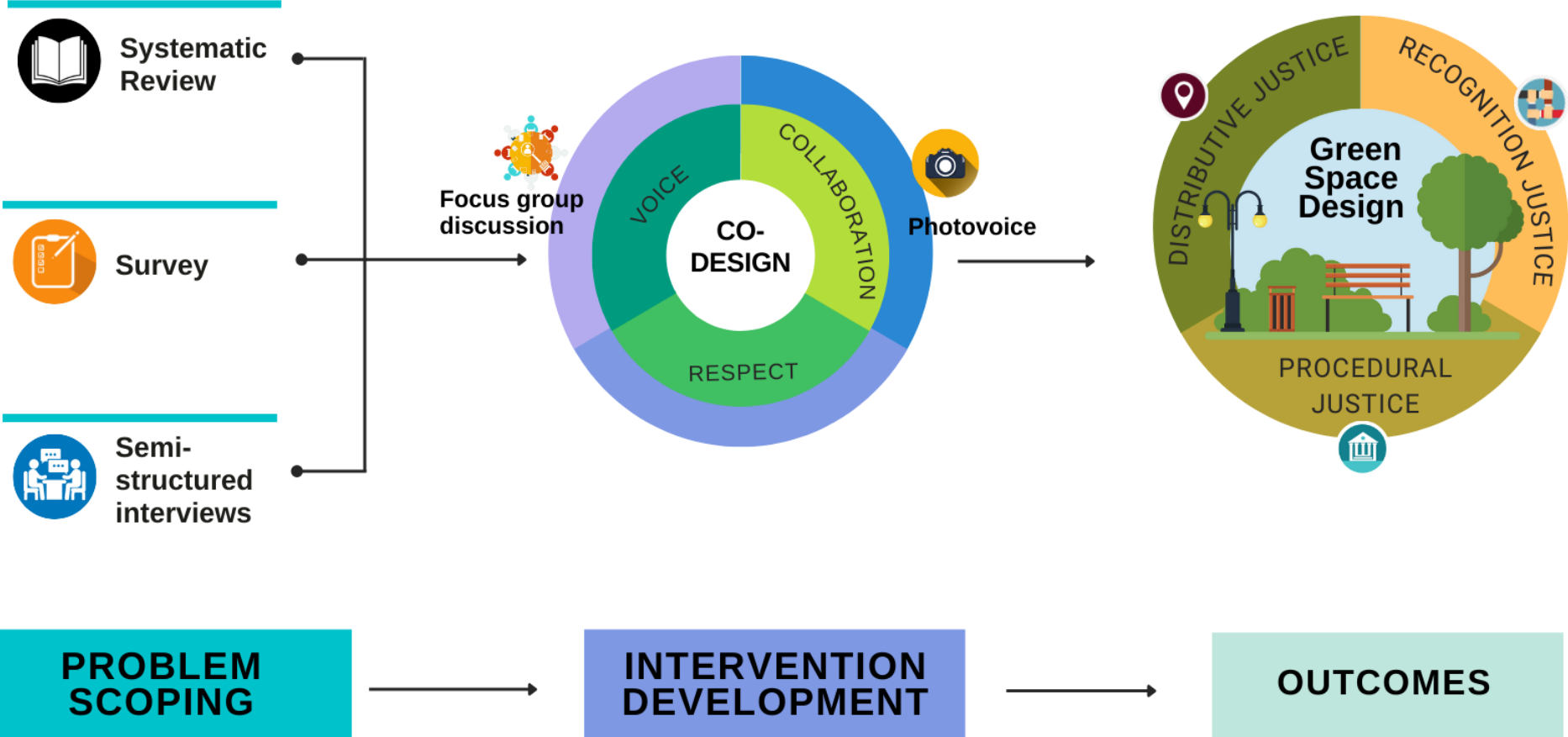


The research **adopts a co-design approach** to explore the factors preventing different social groups from using and accessing green spaces and co-produce strategies to overcome these with participants.



Case study:
London Borough of Hammersmith and Fulham

3. METHODOLOGY



3.1. Survey

- **Inclusion criteria:** Adult UK residents
- **Key topics:**
 - People's use and perspectives of green spaces
 - Barriers to green space use and access
 - Barriers preventing the participation in green space projects
- **Results:** 426 respondents. The sample is representative of the UK population

3.2. Interviews

- **Inclusion criteria:** People living in the Hammersmith and Fulham borough, over 18 years old
- **Key topics:**
 - People's thoughts about green spaces
 - How and why people participate in public consultation, its format, use, results, necessity, and suggestions for improvement

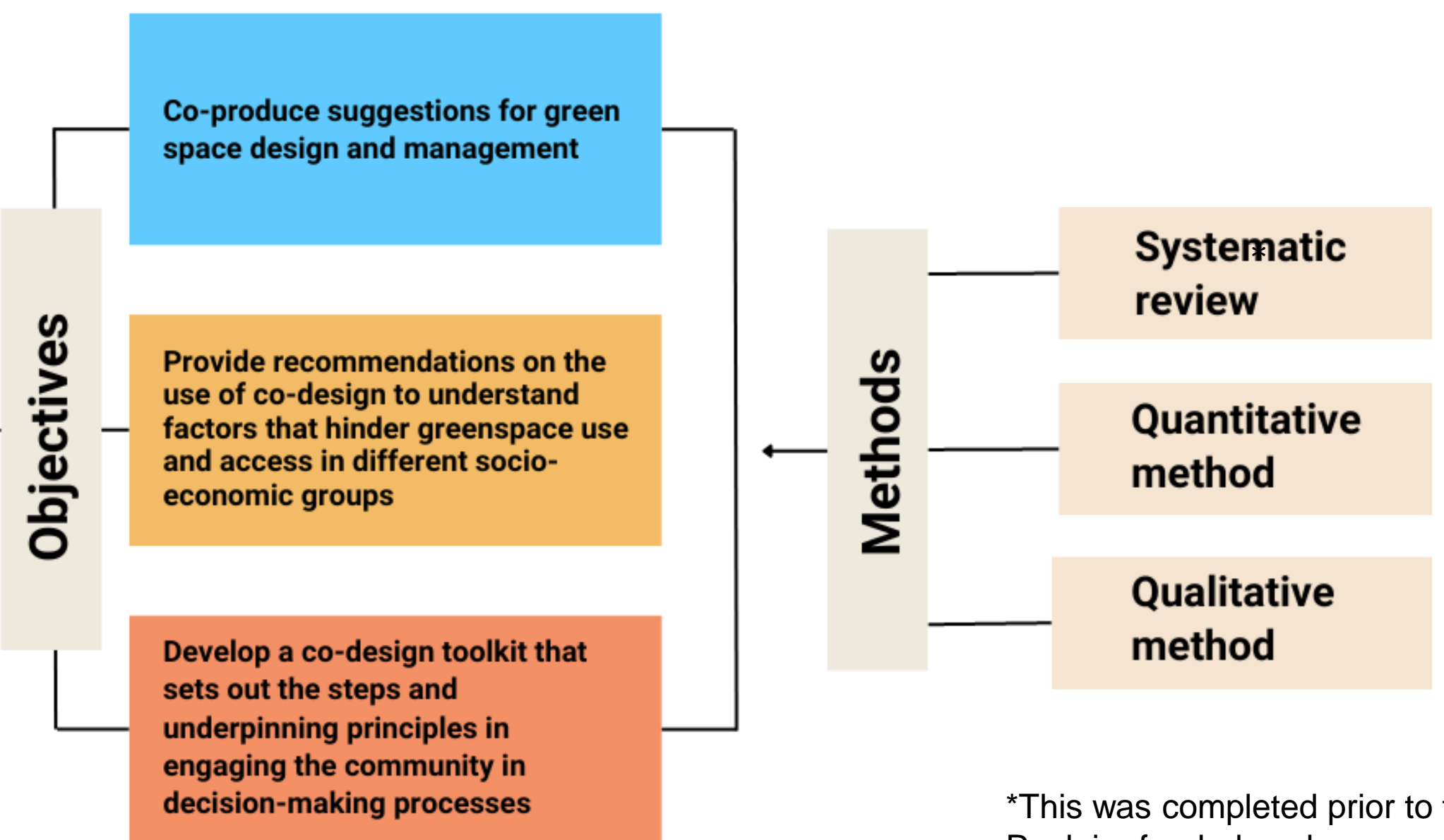
Sex at birth	12 F; 11 M
Nationality	14 British 2 German 2 American 2 South African 1 Ghanaian 1 Chinese 1 Indian
Age categories	Youth (18 – 24 years): 2 Adults (25 – 64 years): 7 Seniors (> 65 years): 12
N who rarely/never use green spaces	4

2. RESEARCH QUESTIONS AND OBJECTIVES

Research Questions

How to overcome the factors that hinder the use and access to green spaces in different socio-economic groups?

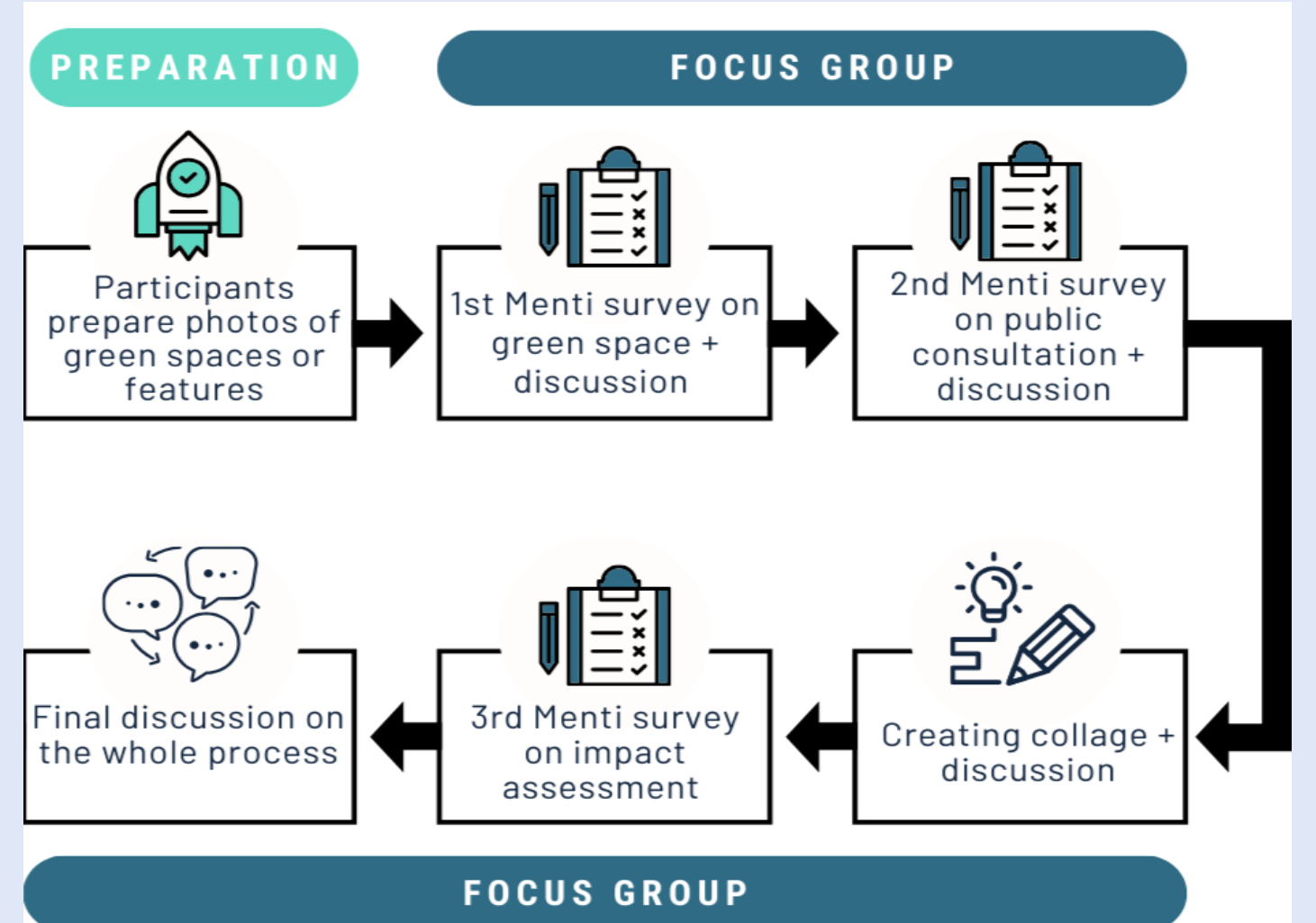
What is the potential of co-design methods in creating an inclusive and functional green space?



*This was completed prior to this Reclaim-funded work

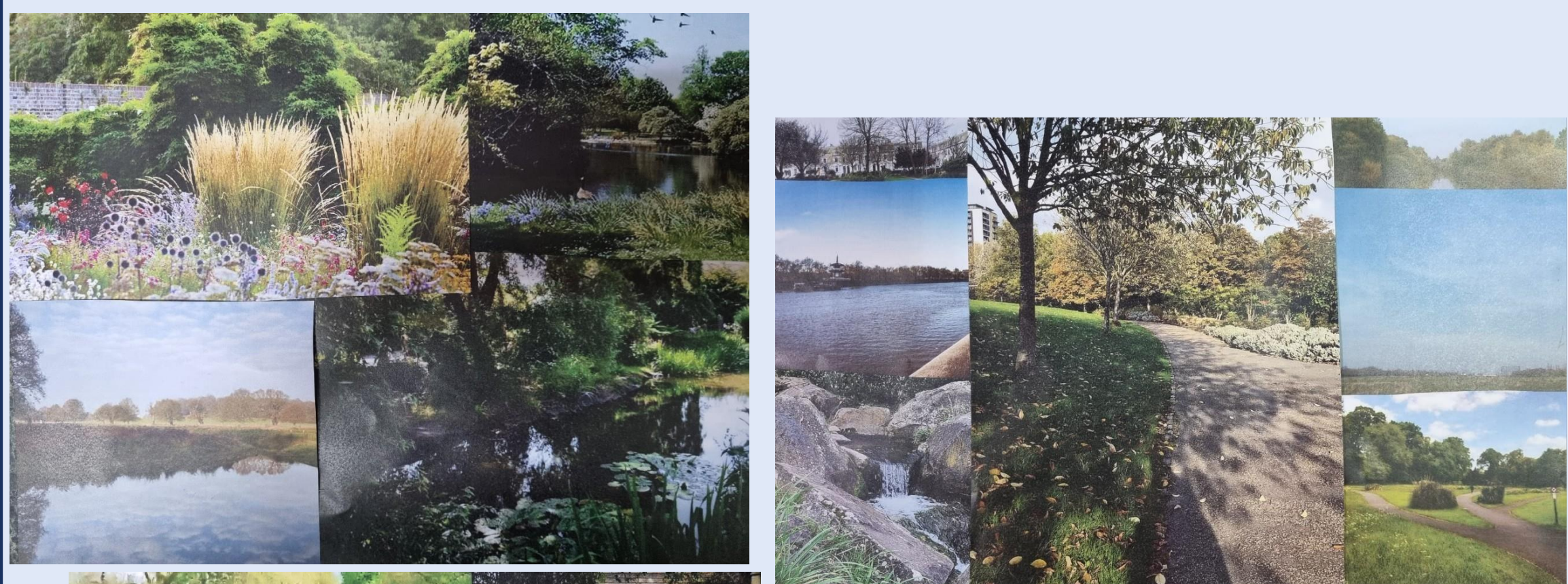
3.3. Focus groups

- **Inclusion criteria:** People living in the Hammersmith and Fulham borough, over 18 years old



	Group 1	Group 2	Group 3
N participants	5	4	6
Sex at birth	3 F; 2 M	2 F; 2 M	4 F; 2 M
Nationality	3 British 1 South African 1 Chinese	3 British 1 Japanese-British 1 German	4 British 1 Indian 1 North American
N who rarely/never use green spaces	2	1	1

4. PRELIMINARY FINDINGS FROM FOCUS GROUPS



Next steps:

- **In-depth analysis** of the collected data to understand the associations between socio-economic statuses and barriers to green space use/ participation in public consultation.
- **Recommendations for future research**
Link to references in this poster:

