



RECLAIM



Community perceptions of new greenspace interventions: the case of Rhyl, North Wales

Dr Sofie Roberts, Research Officer.
Professor Thora Tenbrink, Professor Laurence Jones,
David Fletcher, Alice Fitch, Danial Owen, Liz Wilcox-Jones.





RECLAIM



UNIVERSITY OF
SURREY

Project Aims

- » **Measure and model a suite of benefits** of planned green infrastructure (GI) interventions (wildflower meadows and tree planting) in Rhyl, a deprived area
- » **Understand residents' perspectives** on GI interventions and compare with people's perspectives across the UK
- » **Evaluate effects of providing information** about GI benefits on perceptions and engagement
- » **Synthesise findings** into policy-focused guidance and journal articles

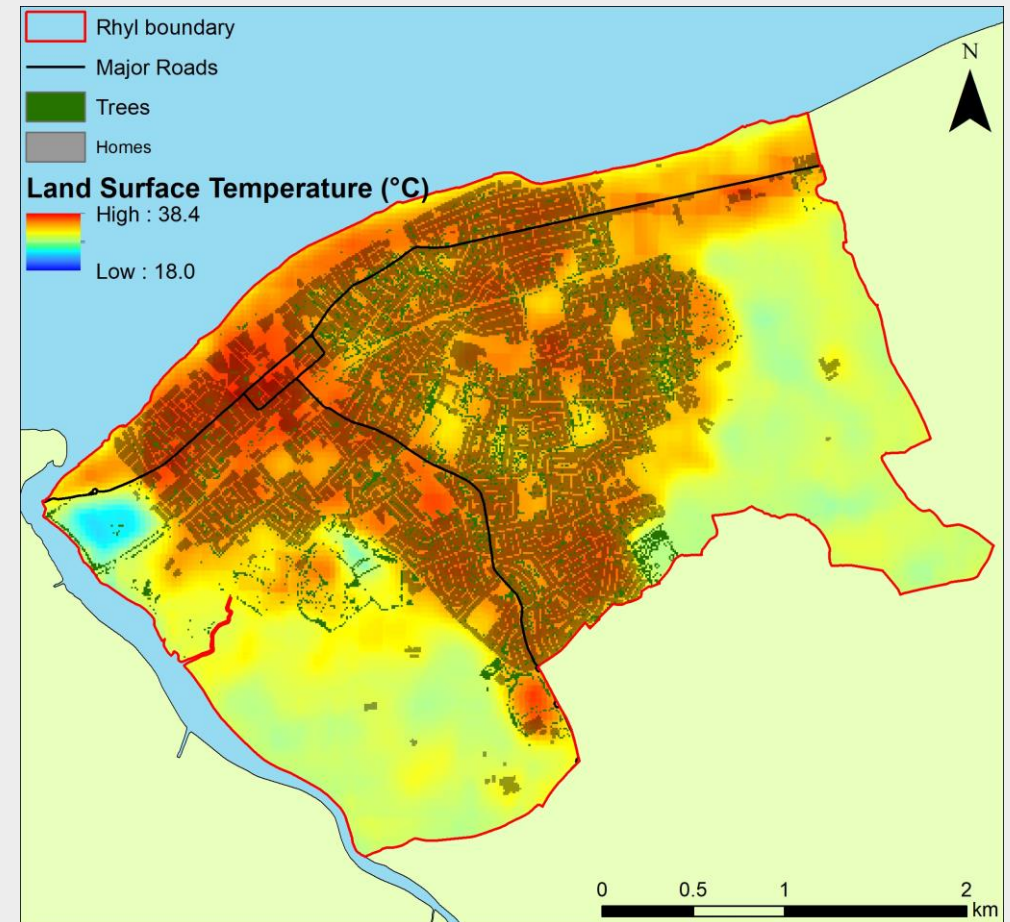


Achievements to date

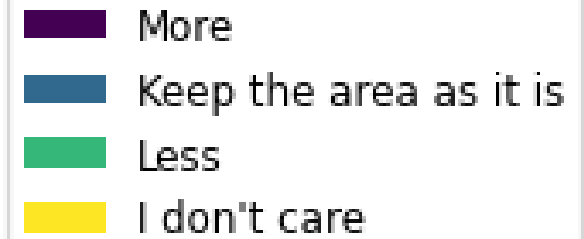
Model the benefits of existing and planned green infrastructure (GI) in Rhyl

Run five ecosystem service models developed for urban settings:

- » Air pollution removal
- » Noise mitigation
- » Carbon storage
- » Flood protection
- » Urban cooling

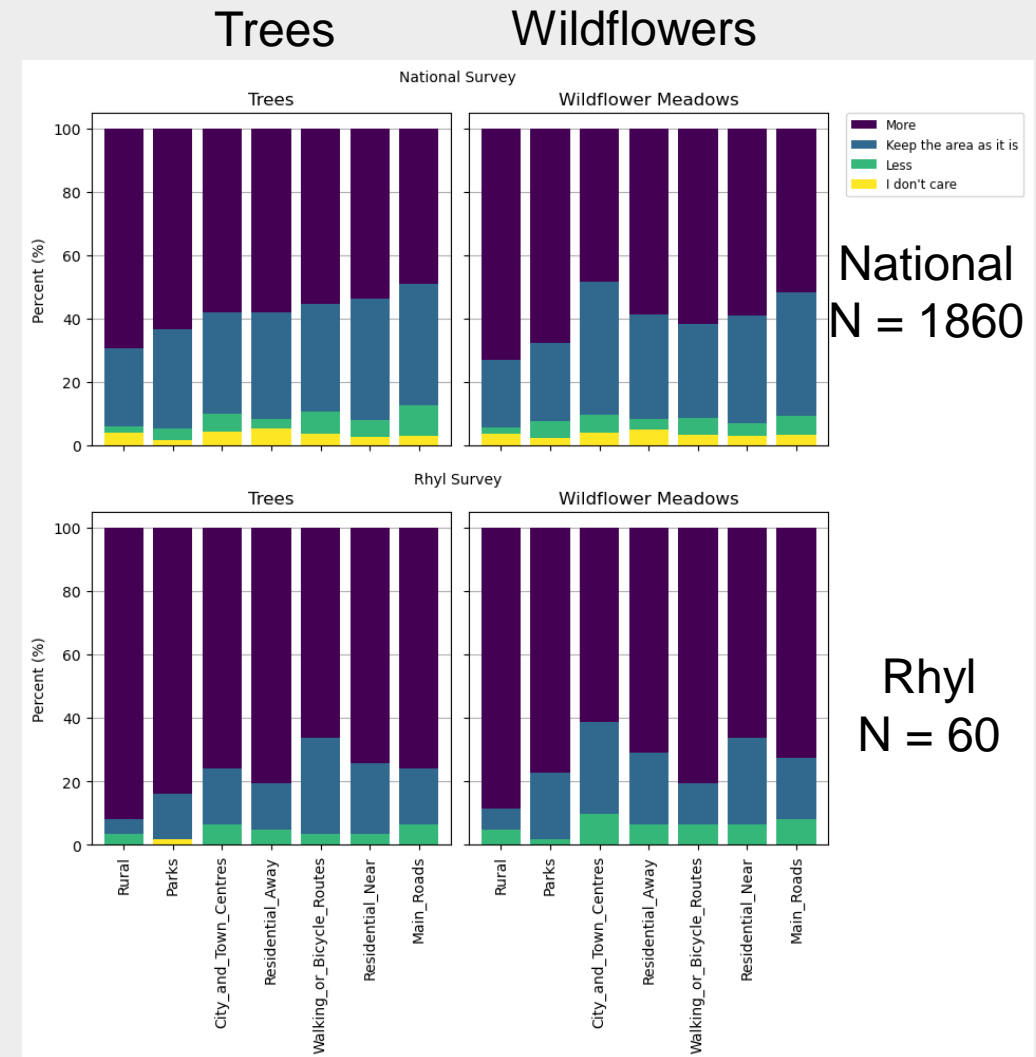


Achievements to date



Online surveys on the acceptability of new GI projects

- » **Half (randomly selected) receiving information** on GI co-benefits: we found that additional information about GI benefits **did not affect responses**
- » **Overwhelmingly positive** response of randomly-selected participants
- » People in **Rhyl** rated **trees higher** than in the national survey
- » The importance of **where and what kind of mitigation** happens



Achievements to date



Conduct interviews with a random stratified sample of Rhyl residents

- » **Majority of interviewees supportive** of planting new trees and establishing wildflower meadows
- » Many participants cared deeply about Rhyl, indicating **place attachment**
- » **Health and wellbeing** was the most important associated benefit of trees and wildflower meadows

“It's just a no brainer, isn't it? Plant a tree and you get all those benefits. That's how I see it”

Do you live in Rhyl?
Share your thoughts about environmental changes

Bangor University are researching the benefits and disadvantages of planting new trees and establishing wildflower meadows in Rhyl

Fill in our 5 minute online survey

A photograph showing a person's hands wearing green gardening gloves, holding a small green tree sapling with soil. The background is a grassy field.

Expectations for the remainder of project



- Submit data to RECLAIM database
- RECLAIM report summarising findings
- Produce guidance document for Denbighshire County Council
- Academic journal publications

Come and talk to me and see our poster to find out more about the project.