



Imperial College  
London



# Investigating the Use of Co-Design to Create an Inclusive and Accessible Green Space

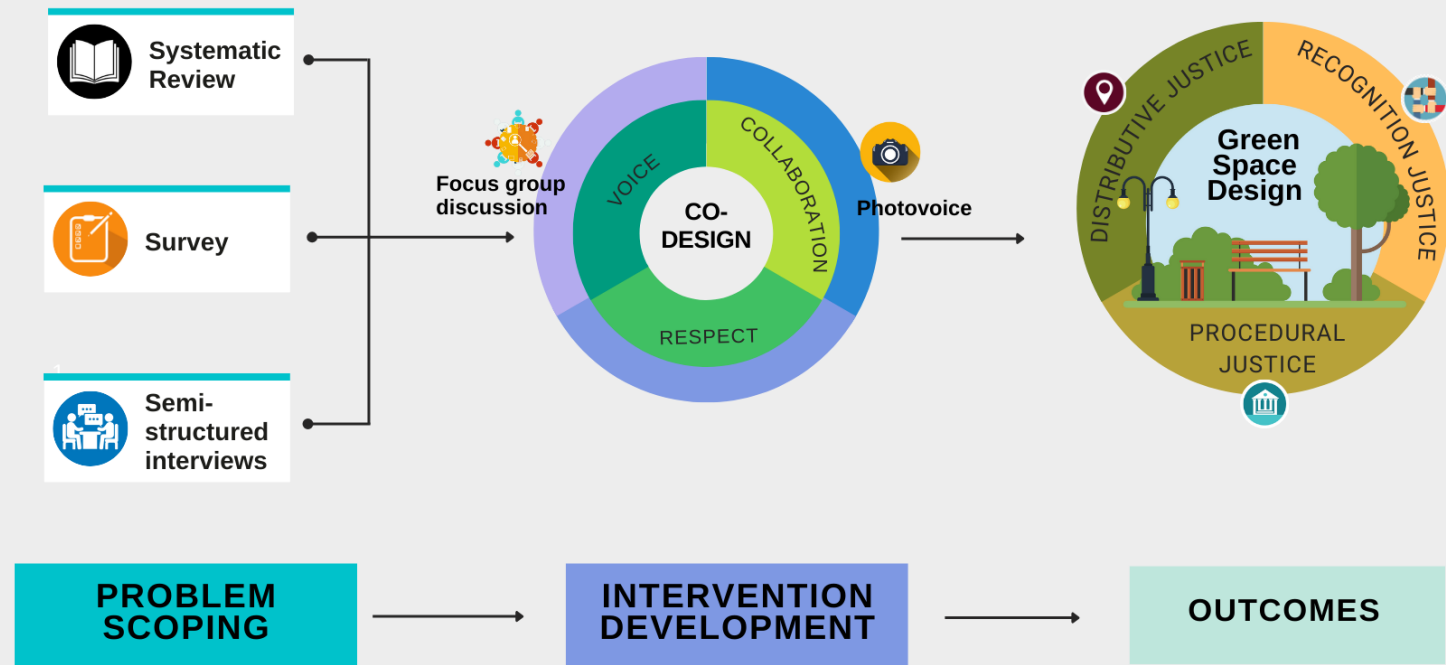
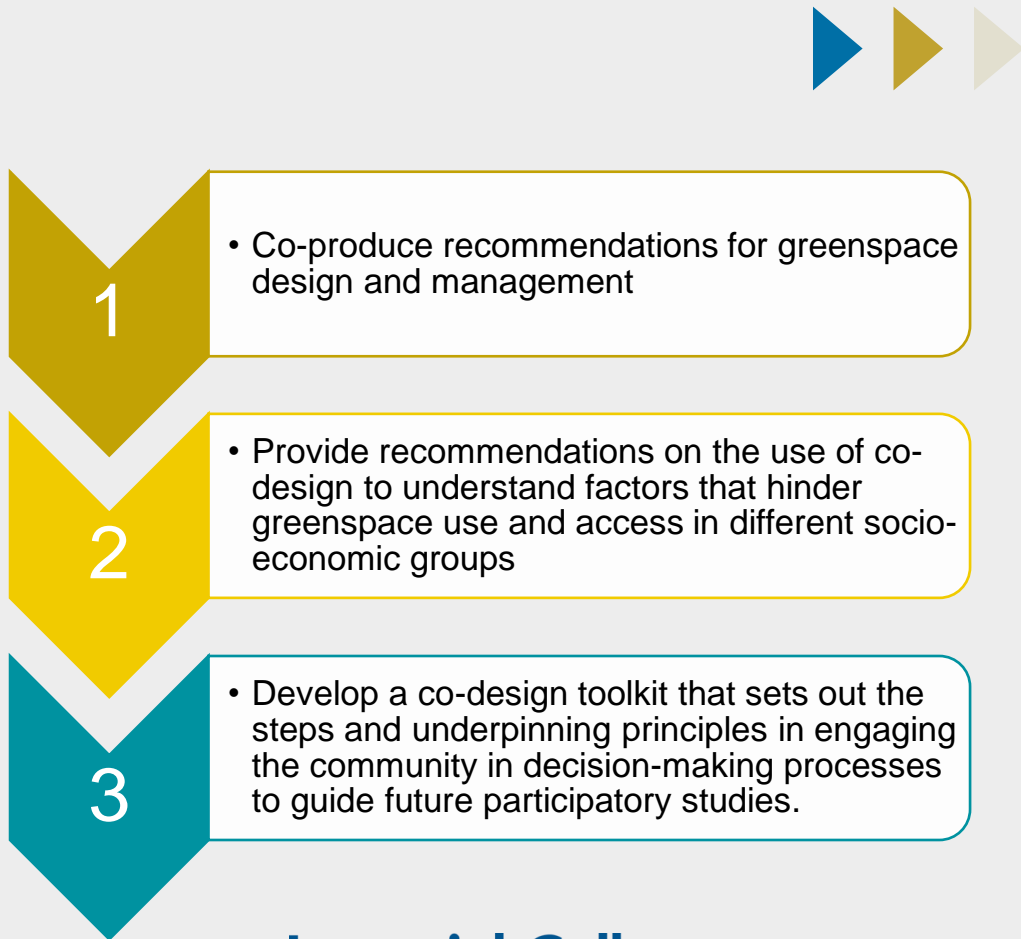
Thuy Nguyen

*PhD Candidate, Imperial College London*

**Lead researchers:** Tilly Collins and Alexandra Collins



# Research Objectives and Methodology



# Survey

- » **Purpose:** Understand the general picture of the topic and inform the design of the interviews and focus groups
- » **Inclusion criteria:** UK residents, over 18 years old
- » **Key topics:**
  - People's use and perspectives of green spaces
  - Barriers to green space use and access
  - Barriers preventing the participation in green space projects
- » **Results:**
  - 426 respondents. The sample is representative of the UK population

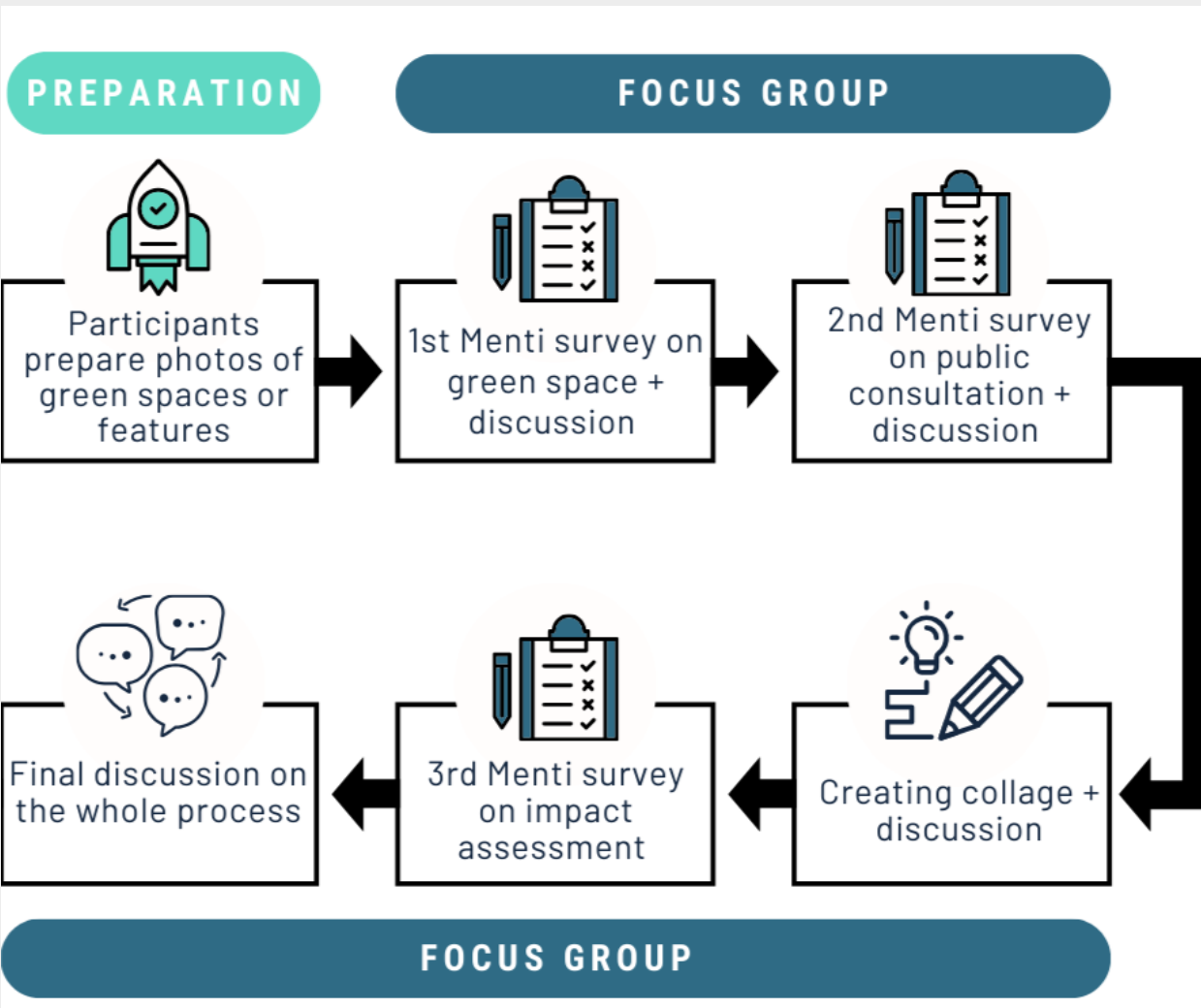


# Interview

- » **Purpose:** Understand individual perspectives regarding green spaces and public consultations
- » **Inclusion criteria:** People living in the Hammersmith and Fulham borough, over 18 years old
- » **Key topics:**
  - People's thoughts about green spaces
  - How and why people participate in public consultation, how the council structures and uses the results of the public consultation, its results, necessity, and suggestions for improvement
- » **Results:**
  - 23 respondents

<b>Sex at birth</b>	12 females, 11 males
<b>Nationality</b>	14 British 2 German 2 American 2 South African 1 Ghanaian 1 Chinese 1 Indian
<b>Age categories</b>	Youth (18 – 24 years): 2 Adults (25 – 64 years): 7 Seniors (> 65 years): 12
<b>Number of people rarely/ never use green spaces</b>	4

# Focus Groups



	Group 1	Group 2	Group 3
<b>Number of participants</b>	5	4	6
<b>Sex at birth</b>	3 females, 2 males	2 females, 2 males	4 females, 2 males
<b>Nationality</b>	3 British 1 African 1 Asian	3 British 1 Asian-British 1 German	4 British 1 Asian 1 American
<b>Number of people rarely/ never use green spaces</b>	2	1	1

# Key Findings and Next Steps

## » Key findings:

- Barriers to green space use/ participation in public participation are different by demographic characteristics such as gender, age, race, and religion.
- Public consultation should be designed with simple and creative activities to facilitate engagement from the public
- The facilitator plays a crucial part in moderating the dynamics of the public consultation
- People tend to participate more if they feel their opinions are valued and acted upon

## » Next steps:

- In-depth analysis of the collected data to understand the associations between socio-economic statuses and barriers to green space use/ participation in public consultation.
- Design of the toolkit